

## HIRE RATECARD

### TABLE OF CONTENTS

<b>Grip</b> .....	2
<b>Anti Vibration System</b> .....	3
<b>Dollies</b> .....	4
<b>Track</b> .....	6
<b>Jibs/Cranes</b> .....	8
<b>Sliders</b> .....	10
<b>Tripod/Tripod Heads</b> .....	12
<b>Tripod Legs</b> .....	14
<b>Gimbal Stabiliser Systems</b> .....	16
<b>Handheld/Shoulder Rigs</b> .....	18
<b>Easyrig/Ready Rig Supports</b> .....	20
<b>Motion Control/Timelapse</b> .....	22
<b>Robotic Head</b> .....	23
<b>Mounts</b> .....	24
<b>Grip Accessories</b> .....	26
<b>Trolleys</b> .....	29
<b>Underwater Housing</b> .....	30
<b>Special</b> .....	31

## GRIP



### ORCAVUE LIFE "BULLET TIME 360 RIG"

Unique 'Bullet time 360" rig for providing the ultimate 'hero' selfie.

**Price:** £158/day  
£474/week

# ANTI VIBRATION SYSTEM



## VIBRATION ISOLATOR

German built horizontal axis anti-vibration mount for dollies to absorb vibration. Can be supplied with MOY or 150mm bowl mount.

**Price:** £83/day  
£249/week



## BLACK ARM DAMPENING CAMERA MOUNT (COMPLETE SYSTEM)

The Black arm is a 3-axis dampening system with additional vibration mount for stabilising roll and tilt errors as well as vertical motion and vibrations.

**Price:** £229/day  
£687/week

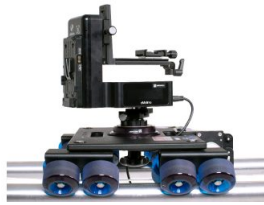
# DOLLIES



## SPECTRUM ST4/ST4.3 MYT SLIDER, ROBOTIC SLIDER SYSTEM 4' TRACK AND 7KG PAYLOAD

The Spectrum is an advanced 4-axis motion controller with ST4 motion control pan and tilt head. The kit includes an MYT 4' slider and is suitable for robotic moves or timelapse applications and can support camera systems of up to 7kg (15lbs).

**Price:** £177/day  
£531/week



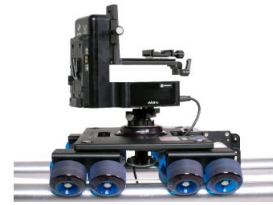
## SPECTRUM ST4/ST4.3 SHARK SLIDER, RUN'N'GUN ROBOTIC SLIDER SYSTEM AND 7KG PAYLOAD

The Spectrum is an advanced 4-axis motion controller with ST4 motion control pan and tilt head.

The Run'n'gun kit includes a 1.2m iFootage Sharkslider kit which is compatible with .

It is suitable for robotic moves or timelapse applications...

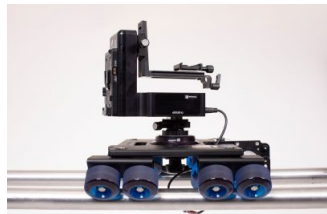
**Price:** £177/day  
£531/week



## SPECTRUM ST4/ST4.3 MYT SLIDER, ROBOTIC SLIDER SYSTEM 5' TRACK AND 7KG PAYLOAD

The Spectrum is an advanced 4-axis motion controller with ST4 motion control pan and tilt head. The kit includes an MYT 5' slider and is suitable for robotic moves or timelapse applications and can support camera systems of up to 7kg (15lbs).

**Price:** £177/day  
£531/week



## SPECTRUM ST4/ST4.3 DANA DOLLY, ROBOTIC SLIDER SYSTEM 3M TRACK AND 7KG PAYLOAD CAPABILITY

The Spectrum is an advanced 4-axis motion controller with ST4 motion control pan and tilt head. The kit includes a Dana Dolly with a 3m track system. It is suitable for robotic moves or timelapse applications and can support camera systems of...

**Price:** £177/day  
£531/week



## UNIVERSAL CENTRE MOUNT FOR SUPER FALCON/SUPER PEEWEE DOLLIES

A modified Ronford Universal Centre Mount which is a sturdy aluminium plate, which attaches to Super Falcon, Super Peewee, Panther and Fisher dollies to allow suitable jib and other associated grip equipment to be safely mounted to it. Note...

**Price:** £104/day  
£312/week



## SUPER FALCON II DOLLY WITH HYDRAULIC RISER

We consider the new Cinetech Super Falcon II dolly to be a total substitute for regular production dollies. Its hydraulic lift and footprint is common to similar dollies, allowing it to manoeuvred into tight spaces. it is supplied with track...

**Price:** £410/day  
£1,230/week



## SUPER-PEEWEE IV PLUS DOLLY WITH HYDRAULIC RISER

The Super Pee Wee IV Plus camera dolly is the perfect location dolly that allows the camera to be raised and lowered via a hydraulic arm. It offers a small footprint so it can be manoeuvred into tight spaces, and built-in track wheels for both...

**Price:** £482/day  
£1,446/week



## SUPER-PEEWEE III PLUS DOLLY WITH HYDRAULIC RISER

The Super Pee Wee III Plus camera dolly is the perfect location dolly that allows the camera to be raised and lowered via a hydraulic arm. It offers a small footprint so it can be manoeuvred into tight spaces, and built-in track wheels for both...

**Price:** £436/day  
£1,308/week



## LAPTOP DOLLY WITH BAZOOKA COLUMN

The Prosup Laptop dolly is a solidly built dolly made from CNC engineered aluminium and stainless steel, supplied with seat and column plus selection of pneumatic and track wheels but unlike other dollies, manages to fit into one pelicase...

**Price:** £104/day  
£312/week



### **CREEPER BUTT DOLLY**

The Creeper Butt-Dolly was invented by I.A.T.S.E local 80 key grip, Carlos Boiles for low-angle handheld camera work.

**Price:** £58/day  
£174/week



### **MAGIC DOLLY WITH BAZOOKA COLUMN**

Flatbed Dolly with Bazooka and seat

**Price:** £93/day  
£279/week



### **7065 ROLLING SPIDER DOLLY**

Rolling Spider for Sachtler and other 100mm bowl tripods, such as Sachtler V-18, V-20, Cine- 30 and O'Connor 1030 tripods.

However, please note that these are not compatible with Sachtler Flowtech legs, which has a specific version.

**Price:** £23/day  
£69/week



### **MATADOR DOLLY WITH BAZOOKA COLUMN**

Complete with center boss and 2 x risers plus 2 seats, with pneumatic and track wheels. 100mm offset bowl supplied.

There is an [gas bazooka](#) option to add to fixed 2-stage bazooka available.

**Price:** £127/day  
£381/week



### **ROLLING SPIDER**

Will support almost any camera weight and any make of tripod, and remain absolutely rigid in operation. Weight 15lb 7oz (7kg).

**Price:** £23/day  
£69/week



### **ROUND-D DOLLY WITH BAZOOKA COLUMN**

The Matthews Round-D 4-wheel steerable dolly. Supplied with dual seat and offset arm plus selection of pneumatic and track wheels, this is a compact and very solid dolly complete with riser kit which will run on all track, operates through...

**Price:** £104/day  
£312/week



### **FOCUS MK II FLATBED DOLLY**

Egripment Focus Dolly flatbed dolly works on Key West plastic track, Moy metal track or SSE speed track.

**Price:** £63/day  
£189/week



### **WALLY DOLLY TRACK & DOLLY KIT**

The Wally Dolly and track system is a versatile and compact camera dolly kit. It allows the operator to control each dolly move whilst still operating the camera.

**Price:** £63/day  
£189/week

# TRACK



## TURBO TRACK KIT - 4 X 5' METAL STRAIGHTS

Made from high tensile aluminium in 5 by 5ft(1.54M) lengths. Track is easily joined by the captive fixings. It is self aligning and can be scissored down from 620mm to 360mm.

**Price:** £50/day  
£150/week



## TURBO METAL CURVED TRACK KIT - 3 X CURVES

Made from high tensile aluminium in 5ft(1.54M) lengths. Track is easily joined by the captive fixings. It is self aligning and can be scissored down from 620mm to 360mm.

**Price:** £40/day  
£120/week



## TRACK 18' DIAMETER CURVED METAL TRACK

18' Diameter Curved Moy Metal Track (medium circle).

18' Moy Curve (8 = circle Centre to centre 18ft, Outside rail to outside rail 20 ft, Inside rail to inside rail 15.8 ft)

(4 x curve pieces makes 180 degrees).

**Price:** £50/day  
£150/week



## TRACK RUN-UP FOR METAL TRACK

Run-up for Moy Metal Track.

**Price:** £5/day  
£15/week



## TRACK 13' DIAMETER CURVED METAL TRACK

13' Diameter Curved Moy Metal Track (small circle).

13' Moy Curve (8 = circle Centre to centre 13 ft, Outside rail to outside rail 15 ft, Inside rail to inside rail 11 ft)

(4 x curve pieces makes 180 degrees).

**Price:** £50/day  
£150/week



## TRACK 2' LENGTH OF METAL TRACK

Moy metal track, 2' piece of straight track.

**Price:** £13/day  
£39/week



**TRACK 4' LENGTH OF METAL TRACK**

Moy metal track, 4' piece of straight track.

**Price:** £19/day  
£57/week

**TRACK 6' LENGTH OF METAL TRACK**

Moy metal track, 6' piece of straight track.

**Price:** £25/day  
£75/week

**TRACK 8' LENGTH OF METAL TRACK**

Moy metal track, 8' piece of straight track.

**Price:** £42/day  
£126/week

# JIBS/CRANES



## JIBO (122-172CM ARM) 20KG PAYLOAD

The new portable 3 section CARTONI JIBo is designed to be one of the most versatile and cost effective lightweight jibs, carrying up to 20kg (44lbs) and fits into a practical lightweight case on wheels.

**Price:** £98/day  
£294/week



## JQ50-III CARBON FIBRE MINI JIB (5M ARM) 10KG PAYLOAD

Designed and built to be lightweight, easy-to-use, and vibration-free in operation, the Q50-III Carbon Fibre Mini Jib from Teris is a compact jib that supports cameras and rigs weighing up to 10kg. Its lightweight carbon fibre arm extends and...

**Price:** £68/day  
£204/week



## 4.2M MAXI JIB/CRANE

The Cobra Maxi-Jib can be built in different lengths between 1.2m(3.4ft) and 4.2m(13.8ft). The Maxi-jib can be mounted on different dollies and can be equipped with the most remote heads. The Cobra Maxi jib now packaged in an easy-to-wheel trolley.

**Price:** £320/day  
£960/week



## ABC CRANE SPEEDY 9 CRANE

Extremely versatile and lightweight crane with 9m (27ft) boom and extremely rapid setup (setup 10 mins). Packs small and lightweight for easy transportation and achieves a 10kg payload at the full 9m, so able to support a fully loaded camera on...

**Price:** £172/day  
£516/week



## ABC CRANE SPEEDY 6 CRANE

Extremely versatile and lightweight crane with 6m (18ft) boom and extremely rapid setup (setup 10 mins). Packs small and lightweight for easy transportation and achieves a 13kg payload at the full 6m, so able to support a fully loaded camera on...

**Price:** £149/day  
£447/week



## PRO 4.1M (14') PROFESSIONAL JIB

Professional Jib Arm which can take a payload of 40lb/18kg at 13.5'/4.1m. This system include a wire frame superstructure.

**Price:** £189/day  
£567/week



## E-JIB PORTABLE TELESCOPIC 6' JIB ARM (78-120CM ARM) 15KG PAYLOAD

Extremely portable and versatile telescopic jib with 15kg payload, so suitable for all cameras upto Amira (depending on configuration). The telescopic design means that it operates with an arm length of 78-120cm, yet the jib only weighs 11kg.

**Price:** £98/day  
£294/week



## REMO30 ROBOTIC HEAD WITH 100MM BOWL FITTING (5KG PAYLOAD)

The Libec REMO 30 Remote Head is a fully-featured remote head with 5kg payload capability.

**Price:** £114/day  
£342/week



## SWIFT JIB 50 1M-1.9M TELESCOPIC JIB ARM

Libec Swift Jib 50 1m-1.9m Telescopic Jib Arm with robotic head option and maximum height of 2.8m/9ft.

**Price:** £104/day  
£312/week





### **PRO 3.1M (10') PROFESSIONAL JIB**

Professional Jib Arm which can take a payload of 54kg at 1.83m or 36kg at 10'/3.10m, making it suitable for Alexa/RED etc.

**Price:** £149/day  
£447/week

# SLIDERS



## SPECTRUM ST4/ST4.3 MYT SLIDER, ROBOTIC SLIDER SYSTEM 4' TRACK AND 7KG PAYLOAD

The Spectrum is an advanced 4-axis motion controller with ST4 motion control pan and tilt head. The kit includes an MYT 4' slider and is suitable for robotic moves or timelapse applications and can support camera systems of up to 7kg (15lbs).

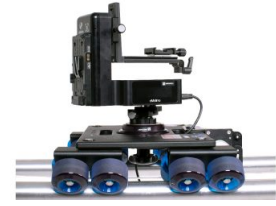
**Price:** £177/day  
£531/week



## 2FT (0.6M) SLIDER

Ronford Baker 2ft slider - requires heavyweight legs or bazooka for operation - suitable for all cameras.

**Price:** £159/day  
£477/week



## SPECTRUM ST4/ST4.3 SHARK SLIDER, RUN'N'GUN ROBOTIC SLIDER SYSTEM AND 7KG PAYLOAD

The Spectrum is an advanced 4-axis motion controller with ST4 motion control pan and tilt head.

The Run'n'gun kit includes a 1.2m iFootage Sharkslider kit which is compatible with .

It is suitable for robotic moves or timelapse applications...

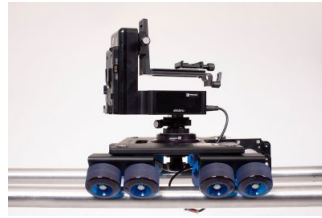
**Price:** £177/day  
£531/week



## SPECTRUM ST4/ST4.3 MYT SLIDER, ROBOTIC SLIDER SYSTEM 5' TRACK AND 7KG PAYLOAD

The Spectrum is an advanced 4-axis motion controller with ST4 motion control pan and tilt head. The kit includes an MYT 5' slider and is suitable for robotic moves or timelapse applications and can support camera systems of up to 7kg (15lbs).

**Price:** £177/day  
£531/week



## SPECTRUM ST4/ST4.3 DANA DOLLY, ROBOTIC SLIDER SYSTEM 3M TRACK AND 7KG PAYLOAD CAPABILITY

The Spectrum is an advanced 4-axis motion controller with ST4 motion control pan and tilt head. The kit includes a Dana Dolly with a 3m track system. It is suitable for robotic moves or timelapse applications and can support camera systems of...

**Price:** £177/day  
£531/week



## TANGO UNDERSLING KIT (10KG PAYLOAD)

This is an undersling version of the Prosup Tango Roller lightweight slider system. We recommend that this kit be able to support camera loads of upto 10 kg/22 lbs. The kit includes 2.2 m length of track and end stops.

**Price:** £189/day  
£567/week



## 1.2M WIRELESS 3-AXIS REMOTE TIME LAPSE CONTROL SLIDER KIT S1A3 (8KG PAYLOAD)

1.2m lightweight slider complete with 3-axis full timelapse kit to allow camera movements on two axis: 90° tilt and 360° pan. Please note that no camera is supplied, nor any timelapse control system (intervalometer), which clients are...

**Price:** £179/day  
£537/week



## 6FT (1.8M) SLIDER

Ronford Baker 6ft (1.8m) slider kit - requires heavyweight legs or bazooka for operation - suitable for all cameras.

**Price:** £288/day  
£864/week



## CAMERA SLIDER SYSTEM WITH MOTION CONTROL (25KG PAYLOAD)

Motion Control Version of Sk8plate Slider system.

**Price:** £161/day  
£483/week



### **CAMERA SLIDER SYSTEM (25KG PAYLOAD)**

The SK8plate is a very strong, versatile and compact slider system (made of aircraft-grade aluminium) which can carry camera payloads upto 25 kg/60 lbs and includes 1.8m length of track and tripods and also includes scaff pole holders, so that...

**Price:** £114/day  
£342/week



### **TANGO SLIDER (16KG PAYLOAD)**

The Prosop Tango Roller is a lightweight slider system for camera payloads upto 15 kg/33 lbs and includes 2.2m length of track, and end stops.

**Price:** £114/day  
£342/week



### **FLEXGRIP SLIDER KIT**

The Panther FlexGrip slider is a quality heavy-duty slider/dolly which incorporates 12 skateboard wheels running on high grade aluminium track and is compatible with all camera weights including Alexa. The track is extendable and the system is...

**Price:** £172/day  
£516/week



### **4FT (1.2M) SLIDER**

Ronford Baker 4ft slider kit - requires heavyweight legs or bazooka for operation - suitable for all cameras.

**Price:** £172/day  
£516/week



### **3FT (0.9M) SLIDER**

Ronford Baker 3ft slider kit - requires heavyweight legs or bazooka for operation - suitable for all cameras.

**Price:** £149/day  
£447/week

# TRIPOD/TRIPOD HEADS



## ATLAS 50S FLUID HEAD (150MM BOWL)

Atlas 50S Fluid Head with Snap & Go side-loading mechanism, allows fast mounting and easy adjustment for camera slide plates, compatible with Arri Slide plates and O'Connor. (150mm bowl fitting)

**Price:** £127/day  
£381/week



## VIDEO-20 TRIPOD WITH FLOWTECH 100 CARBON LEGS

Sachtler Video 20S1 head with the latest Flowtech 100 carbon fibre legs.

**Price:** £46/day  
£138/week



## VIDEO-18 TRIPOD WITH FLOWTECH 100 CARBON LEGS

Sachtler Video 18 head with the latest Flowtech 100 carbon fibre legs.

**Price:** £40/day  
£120/week



## F7 TRIPOD HEAD

The Ronford-Baker Fluid 7 head is designed for use with Moy or bowl legs and has a nodal characteristic, making it better suited for low-angle shots in underslung mode.

**Price:** £172/day  
£516/week



## 2575D ULTIMATE TRIPOD HEAD

The O'Connor 2575D is the largest film head in the O'Connor family with a payload capacity of 60.5kg (133lbs).

**Price:** £207/day  
£621/week



## DUTCH HEAD

Sachtler Dutch Head features a cross-sliding plate with a limited sliding range for precise camera control, allowing the camera's centre of gravity to align over the swivelling axis and is our version of the Tango Swing Head.

**Price:** £91/day  
£273/week



## 2560 ULTIMATE TRIPOD HEAD

The O'Connor 2560 is the 2nd largest film head in the O'Connor family with a payload capacity of 37.7kg (83lbs) and is a direct replacement to the O'Connor 2060 head, though with higher payload capacity.

**Price:** £172/day  
£516/week



## COMPASS 12 SOLO 3-STAGE CARBON FIBRE TRIPOD

Highly acclaimed Miller Compass 12 fluid head (10kg payload) with ultra light Solo 75 3-Stage Carbon Fibre Tripod suited for DSLR to C300/FS-7 cameras.

**Price:** £28/day  
£84/week



## CAT311 CARBON FIBRE MONOPOD (SOLOPOD)

Very stable 3-stage precision telescopic lightweight professional monopod with 3 stage telescopic leg, comfortable neoprene grip suitable for small to medium-weight cameras.

**Price:** £6/day  
£18/week



## FSB-6 CARBON FIBRE TRIPOD

Compact tripod with 7kg payload capability suitable for compact camcorders up to C300mk II

**Price:** £22/day  
£66/week



## ALUMINIUM FLUID MONOPOD WITH 500 VIDEO HEAD

The MVM500A is a lightweight fluid monopod with a specially adapted 500 video head attached - good for cameras up to medium weight and where portability is a must.

**Price:** £19/day  
£57/week



## 1030D ULTIMATE 3 STAGE CF TRIPOD

The O'Connor Ultimate 1030D fluid head tripod system is designed for use with new full-format sensor, lighter weight cameras such as the RED Epic, Amira etc and is an idea alternative to the Sachtler Video-20s, sharing the 100mm bowl mount and...

**Price:** £57/day



### VITESSE GEARED TRIPOD HEAD

Mitchell Vitesse Geared Head.

**Price:** £138/day  
£414/week



### STUDIO-80 TRIPOD HEAD

Sachtler Studio 80 Head. Maximum load 90kg (200lbs).

**Price:** £109/day  
£327/week

£171/week



### VIDEO-18 3 STAGE CF TRIPOD

Sachtler Video 18 head with 3 x stage carbon fiber legs

**Price:** £40/day  
£120/week



### CINE-30 HD 3 STAGE CF TRIPOD

Sachtler head with 150mm bowl fitting for HD applications.

Compatible with the [7065 Rolling Spider Dolly](#).

**Price:** £81/day  
£243/week

# TRIPOD LEGS



## VARIO GAS BAZOOKA XL 55-125CM (VARIO BAZOOKA)

The height-adjustable Vario Bazooka XL (176960) comes with black hard-coat © surface for even longer durability. Huge height adjustment and enormous load capacity, guarantee maximum flexibility.

**Price:** £98/day  
£294/week



## HIGH-HAT 150MM BOWL

Ronford Baker High Hat with 150mm Bowl fitting.

**Price:** £23/day  
£69/week



## 150MM BOWL HEAVY DUTY TALL LEGS

Ronford Heavyweight Tall 3 stage tripod legs with 150mm Bowl fitting.

**Price:** £28/day  
£84/week



## DA 150K BABY LEGS

Sachtler 150mm bowl baby legs which supports low shooting positions of 15- 39 cm. 40kg payload capability.

**Price:** £28/day  
£84/week



## TRI HAT, MOY

Ronford Baker Tri Hat with Moy fitting.

**Price:** £23/day  
£69/week



## MOY LOW HAT

Ronford Baker Lo Hat with Moy fitting.

**Price:** £23/day  
£69/week



## DA-100 BABY LEGS

For Sachtler Video 20 tripods.

**Price:** £18/day  
£54/week



## 150MM BOWL HEAVY DUTY SHORT LEGS

Ronford Baker medium-weight Short tripod legs with 150mm Bowl fitting.

Specifications

Height: With legs spread at 1'8" (50.8cm) to 3' (91.4cm).

Weight: 18lb (8kg).

Spreader Dimensions: (center to foot) minimum 1'5" (43cm),...

**Price:** £28/day  
£84/week



## GAS BAZOOKA 35-75CM (VARIO-BAZOOKA)

2 section adjustable gas bazooka for adjusting height of column without removing bazooka sections (will not work during take).

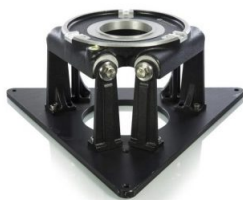
**Price:** £69/day  
£207/week



### 100MM BOWL HIGH-HAT

Ronford Baker High Hat with 100mm Bowl fitting, suitable for O'Conner 1030, Sachtler Video 20 and Video 18 tripod heads.

**Price:** £18/day  
£54/week



### HIGH-HAT MOY

Ronford Baker High Hat with Moy fitting.

**Price:** £23/day  
£69/week



### MOY MOUNT HEAVY DUTY SHORT LEGS

Ronford Baker medium-weight Short tripod legs with Moy fitting.

**Price:** £28/day  
£84/week



### MOY MOUNT MEDIUM DUTY TALL LEGS

Ronford Baker Medium-weight Tall 3 stage tripod legs with Moy fitting.

**Price:** £28/day  
£84/week



### MOY MOUNT HEAVY DUTY TALL LEGS

Ronford Baker Heavyweight Tall 3 stage tripod legs with Moy fitting.

**Price:** £28/day  
£84/week



### BAZOOKA PLATFORM: 5 SECTION BAZOOKA

5 section bazooka with a Moy fitting and with a lazy leg option.

**Price:** £109/day  
£327/week



# GIMBAL STABILISER SYSTEMS



## VARIO 5 WOMEN'S/FLOWCINE SERENE/GIMBAL FLEX VEST (5-17KG MAX)

This features an Easyrig jacket anatomically designed for the female form with a modified vest featuring a reinforced upper chest and larger padded belt for extra comfort. Walking produces an up and down movement which the viewer becomes...

**Price:** £200/day  
£600/week



## RONIN RS3 PRO COMBO - 3-AXIS DSLR HANDHELD GIMBAL SYSTEM (4.5KG PAYLOAD)

The latest compact DJI Ronin RS3 Gimbal with 4.5kg (10lb) payload capacity and supplied with the Expansion Base 2 kit. For Cameras such as the FX6, C70 & KOMODO.

**Price:** £120/day  
£360/week



## RONIN 2, 3-AXIS GIMBAL SYSTEM (14KG/30LB PAYLOAD)

The latest Ronin 2 3 Axis Gimbal System designed to carry large payloads of up to 30lb (14kg), so suitable for large and small cameras enabling steadycam-type shots on carbon-fibre frame.

**Price:** £288 - £310/day  
£864 - £930/week



## RONIN 4D, 8K FF CINEMA CAMERA/GIMBAL SYSTEM

8K version of the Ronin 4D, which includes the Integrated 4-Axis Gimbal with built-in Zenmuse X9 8K Cinema Camera with onboard RAW capture.

This is an entirely new concept camera that is revolutionising camera production methodology.

VMI...

**Price:** £600/day  
£1,800/week



## RONIN 4D, 6K FF CINEMA CAMERA/GIMBAL SYSTEM

Integrated 4-Axis Gimbal with built-in 6K Cinema Camera with onboard RAW capture. This is an entirely new concept camera that DJI promises will revolutionise camera production methodology.

VMI Package includes gimbal, 6K camera, 3 x prime...

**Price:** £525/day  
£1,575/week



## RONIN S - 3-AXIS DSLR HANDHELD GIMBAL SYSTEM

Single-handed 3 Axis Gimbal which is ideally suited to DSLR camera setups.

**Price:** £75/day  
£225/week



## FLOAT SYSTEM

The Tilta Float System works in conjunction with the DJI RS 2 and RS3 Pro to provide a small, compact camera stabilizer system to allow you to accomplish smooth cinematic camera movements with smaller camera setups.

**Price:** £50/day  
£150/week



## RONIN RS 2 PRO COMBO - 3-AXIS DSLR HANDHELD GIMBAL SYSTEM (4.5KG PAYLOAD)

The latest compact Ronin Gimbal with 4.5kg (10lb) payload capacity.

This is the Pro Combo variant which includes focus motor and video transmitter built into the device and also the full DJI Ronin Expansion Base Kit.

**Price:** £120/day  
£360/week



## READY RIG GS STABILISER VEST W. PROARM UPGRADE FOR RONIN/MOVI

The Ready Rig GS Support is the latest version of the Ready Rig fully featured stabilising vest for Ronin, Ronin 2, MoVi, Ronin or equivalent Gimbals, supporting up to 14kg (30lb). Note that this is the ProArm upgrade version of the Readyrig GS...

**Price:** £120/day  
£360/week





### **RONIN MX - 3-AXIS GIMBAL SYSTEM (4.5KG PAYLOAD - M VERSION)**

This 3 Axis Gimbal version of the Ronin is smaller and lighter than the standard Ronin but larger and more sturdy than the Ronin-M and better suited to small DSLR and lightweight cameras. As with other Ronin systems, it is a handheld 3-axis...

**Price:** £104/day  
£312/week



### **VARIO 5/FLOWCINE SERENE/CINEMA/GIMBAL RIG VEST (CAMERAS 5-17KG/30-55 LB)**

Walking produces an up and down movement which the viewer becomes aware of when the camera movements are damped, so the Serene arm was developed. This system features the Easyrig Vario 5 with Flowcine attachment to be able to support a 5-17kg...

**Price:** £200/day  
£600/week



### **RONIN/MOVI GIMBAL TRIPOD/JIB/Crane MOUNT FRAME**

This is a custom mount designed and manufactured by VMI to mount a Ronin MoVi Pro gimbal system to a tripod or jib/crane to convert it to a full 3-axis remote head. Once mounted, the gimbal-mounted camera can be remotely controlled using either...

**Price:** £69/day  
£207/week



### **TOAD IN THE HOLE QUICK RELEASE MOUNT**

The Toad In The Hole Quick Release is a sleek, lightweight, low-profile quick release unit, which provides an easy mount and release solution for the MoVi Pro.

**Price:** £28/day  
£84/week



### **SPINDLE PAIR FOR MÖVI-PRO/MÖVI M5/M10/M15 GIMBAL SYSTEMS**

The CineMilled Spindle Mount is designed for use with the MoVi-Pro Gimbal System to permit the use of the [Ready Rig GS](#) or equivalent to assist the operator and finesse control.

**Price:** £23/day  
£69/week

# HANDHELD/SHOULDER RIGS



## RONIN 4D, 8K FF CINEMA CAMERA/GIMBAL SYSTEM

8K version of the Ronin 4D, which includes the Integrated 4-Axis Gimbal with built-in Zenmuse X9 8K Cinema Camera with onboard RAW capture. This is an entirely new concept camera that is revolutionising camera production methodology.

VMI...

**Price:** £600/day  
£1,800/week



## RONIN 4D, 6K FF CINEMA CAMERA/GIMBAL SYSTEM

Integrated 4-Axis Gimbal with built-in 6K Cinema Camera with onboard RAW capture. This is an entirely new concept camera that DJI promises will revolutionise camera production methodology.

VMI Package includes gimbal, 6K camera, 3 x prime...

**Price:** £525/day  
£1,575/week



## RONIN 2, 3-AXIS GIMBAL SYSTEM (14KG/30LB PAYLOAD)

The latest Ronin 2 3 Axis Gimbal System designed to carry large payloads of up to 30lb (14kg), so suitable for large and small cameras enabling steadycam-type shots on carbon-fibre frame.

**Price:** £288 - £310/day  
£864 - £930/week



## LIGHTWEIGHT SHOULDER RIG

Tilta Lightweight Shoulder Rig designed for lightweight handheld camera operating.

**Price:**



## VENICE RIALTO EXTENSION SYSTEM

The Sony Venice Rialto allows the front image block from the Sony Venice to be relocated to a much smaller housing for easy shoulder-mount or portable operation. This allows the Venice to be used in much tighter spaces than previously capable...

**Price:** £402/day  
£1,206/week



## WPA-1 (WEDGE PLATE ADAPTER) FOR ALEXA MINI

The ARRI WPA-1 (Wedge Plate Adapter) kit turns an Alexa Mini in to a camera with a quick-release mount (VCT-14) and shoulder pad for broadcast-type productions.

**Price:** £104/day  
£312/week



## 4D FLEX GIMBAL EXTENDER

This extendable solution allows the Ronin 4D to be used in Split Mode, thereby reducing handheld weight, enhancing shooting flexibility and supporting more lens options.

**Price:** £50/day  
£150/week



## HANDHELD MOUNT KIT

Blue Modular Handheld kit for all types of camera.

This is a completely customisable hand-held kit which can be used with every camera and can configure a combination of short and long bars to the supplied handles.

**Price:** £69/day  
£207/week



## SINGLE-HANDED PISTOL GRIP WITH 15MM BAR SUPPORT AND MCS PAD

Pistol-grip set for compact large sensor cameras with MCS Shoulder Pad and 15mm bars fitting.

**Price:** £5/day  
£15/week



### **DUAL MOOSEBARS HANDHELD KIT WITH 15MM BAR SUPPORT AND MCS PAD**

Custom Shoulder Set for compact large sensor cameras with MCS Shoulder Pad and Moose Bars.

**Price:** £35/day  
£105/week



### **HGA-1 HANDGRIP ADAPTER FOR CANON C300**

Handgrip Adapter HGA-1 for Canon C300 also works with other Canon models (C100 and C500) and this allows the side camera handle to be attached at the end of Blue Mod bars, ARRI cage or suitable moose bars by means of the rosette mount. Note that...

**Price:** £18/day  
£54/week



### **DUAL MOOSEBARS HANDHELD KIT WITH 15MM BAR SUPPORT AND REDROCK PAD**

Custom Shoulder Set for compact large sensor cameras with REDROCK Shoulder Pad and Moose Bars.

**Price:** £35/day  
£105/week

# EASYRIG/READY RIG SUPPORTS



## VARIO 5 WOMEN'S/FLOWCINE SERENE/GIMBAL FLEX VEST (5-17KG MAX)

This features an Easyrig jacket anatomically designed for the female form with a modified vest featuring a reinforced upper chest and larger padded belt for extra comfort. Walking produces and up and down movement which the viewer becomes...

**Price:** £200/day  
£600/week



## READY RIG GS STABILISER VEST W. PROARM UPGRADE FOR RONIN/MOVI

The Ready Rig GS Support is the latest version of the Ready Rig fully featured stabilising vest for Ronin, Ronin 2, MoVi, Ronin or equivalent Gimbals, supporting up to 14kg (30lb). Note that this is the ProArm upgrade version of the Readyrig GS...

**Price:** £120/day  
£360/week



## SPINDLE PAIR FOR MōVI-PRO/MōVI M5/M10/M15 GIMBAL SYSTEMS

The CineMilled Spindle Mount is designed for use with the Mōvi-Pro Gimbal System to permit the use of the [Ready Rig GS](#) or equivalent to assist the operator and finesse control.

**Price:** £23/day  
£69/week



## VARIO 5 STRONG/STABIL/CINEMA VEST (14-25KG MAX)

The Easyrig STABIL is incorporated into the Easyrig system to help smooth the up and down movement caused by walking. It is Easyrig's own solution to the optional Flowcine Serene arm. For reference, Stabil is the Swedish word for...

**Price:** £215/day  
£645/week



## VARIO 5 WOMENS GIMBAL FLEX/CINEMAFLEX (5-17KG)

This is an Easyrig anatomically designed for the female form. Identical to the conventional Vario 5 and able to support cameras/gimbals weighing from 5-17kg, the Easyrig Vario 5 Womens (Cinemaflex) system has a modified vest with a...

**Price:** £138/day  
£414/week



## VARIO 5/FLOWCINE SERENE/CINEMA/GIMBAL RIG VEST (CAMERAS 5-17KG/30-55 LB)

Walking produces and up and down movement which the viewer becomes aware of when the camera movements are damped, so the serene arm was developed. This system features the Easyrig Vario 5 with Flowcine attachment to be able to support a 5-17kg...

**Price:** £200/day  
£600/week



## VARIO 5/STABIL/CINEMA VEST (5-17KG MAX)

The Easyrig STABIL is incorporated into the Easyrig system to help smooth the up and down movement caused by walking. It is Easyrig's own solution to the optional Flowcine Serene arm. For reference, Stabil is the Swedish word for "Stable".

**Price:** £215/day  
£645/week



## MINIMAX (2-7KG)

The Easyrig Mini Strong Camera Support supports from 2-7kg (4.4 to 14.4 lbs) of camera weight, takes the strain of the camera from your arms, leaving you with the sole job of pointing camera where you want to shoot.

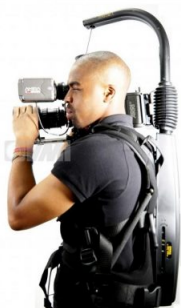
**Price:** £63/day  
£189/week



## VARIO 5 STRONG/CINEMA/GIMBAL VEST (13-25KG/30-55 LB)

The stronger version of the Easyrig Vario 5 but with a much larger payload capacity, supporting cameras of between 13-25kg (30-55 lb).

**Price:** £159/day  
£477/week



### **VARIO 5/CINEMA VEST (5-17KG) - REGULAR MODEL**

The popular Easyrig Vario 5 supports cameras between 5 and 17kg and spreads the weight onto the operator's body using a Cinema Vest body harness.

**Price:** £137/day  
£411/week

# MOTION CONTROL/TIMELAPSE



## **1.2M WIRELESS 3-AXIS REMOTE TIME LAPSE CONTROL SLIDER KIT S1A3 (8KG PAYLOAD)**

1.2m lightweight slider complete with 3-axis full timelapse kit to allow camera movements on two axis: 90° tilt and 360° pan. Please note that no camera is supplied, nor any timelapse control system (intervalometer), which clients are...

**Price:** £179/day  
£537/week



## **CAMERA SLIDER SYSTEM WITH MOTION CONTROL (25KG PAYLOAD)**

Motion Control Version of Sk8plate Slider system.

**Price:** £161/day  
£483/week

# ROBOTIC HEAD



## REMO30 ROBOTIC HEAD WITH 100MM BOWL FITTING (5KG PAYLOAD)

The Libec REMO 30 Remote Head is a fully-featured remote head with 5kg payload capability.

**Price:** £114/day  
£342/week

# MOUNTS



## 7" ROTATING OFFSET

Ronford Baker Moy/Mitchell fit 7" rotating offset. Usually used in conjunction with a dolly.

**Price:** £75/day  
£225/week



## ALEXA-35 VERTICAL FORMAT KIT

The Vertical format Adapter set is required to use the ALEXA-35 with the sensor orientated portrait ("vertically").

**Price:** £50/day  
£150/week



## ALEXA MINI VERTICAL FORMAT KIT

The Vertical format Adapter set is required to use the ALEXA Mini with the sensor orientated portrait ("vertically").

The set is compatible with most existing ARRI camera accessories for ALEXA Mini, such as the Compact Bridge Plates CBP1 and...

**Price:** £50/day  
£150/week



## ELECTRONIC TURNTABLE (100KG PAYLOAD)

White video turntable with 100kg payload, suitable for models.

**Price:** £91/day  
£273/week



## C3 VACUMOUNT SUCTION MOUNT (100KG PAYLOAD)

The C3 VacuMount is a lightweight (3 kg) battery-operated, ultra-flexible, vacuum-mounting platform with an impressive 100kg payload capability. It delivers a multitude of rigging possibilities with impressive functionality.

It is ideal for...

**Price:** £75/day  
£225/week



## VIBRATION ISOLATOR

German built horizontal axis anti-vibration mount for dollies to absorb vibration. Can be supplied with MOY or 150mm bowl mount.

**Price:** £83/day  
£249/week



## BLACK ARM DAMPENING CAMERA MOUNT (COMPLETE SYSTEM)

The Black arm is a 3-axis dampening system with additional vibration mount for stabilising roll and tilt errors as well as vertical motion and vibrations.

**Price:** £229/day  
£687/week



## TWIN TUBE PADDLE MOUNT

Extend or under-sling your camera over edges securely with the MOY Paddle Mount.

**Price:** £69/day  
£207/week



## HALO HEAD

Used to create a hand-held look whilst on a tripod without compromising control.

**Price:** £51/day  
£153/week





### LADDERPOD 8' - 14' (2.5M - 4.2M)

Ladderpod 14' (4.2m) with Boss fitting.  
2 x stage Ladderpod min 8ft, extendable to 14ft (4.2m). Needs 3-way leveller to fit a Mitchell/Moy plate in order to affix a tripod head.

**Price:** £127/day  
£381/week



### ALUMINIUM FLUID MONOPOD WITH 500 VIDEO HEAD

The MVM500A is a lightweight fluid monopod with a specially adapted 500 video head attached - good for cameras up to medium weight and where portability is a must.

**Price:** £19/day  
£57/week

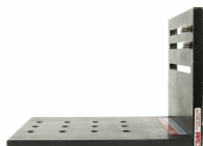


### 3 X CUP SUCTION MOUNT (LIMPET MOUNT)

Designed for lightweight DV/DVCAM cameras and can safely carry loads of up to 22.5kg (50 pounds).

If you are using this device on a moving vehicle, then VMI strongly recommend that this device should only be used with a NVQ Level 3 grip as...

**Price:** £75/day  
£225/week



### RIGHT ANGLE TRIPOD MOUNT

A custom 90 degree camera mount for mounting a camera at a right angle for shooting in portrait mode. Load weight: 30kg

**Price:** £35/day  
£105/week



### CINESADDLE LARGE

Large, suitable for full-size camcorders.

**Price:** £43/day  
£129/week



### WEDGE/TILT PLATE (0-90°)

Variable tilt platform for camera mount from 0-90°. Flexible mounting options with 1/4" and 3/8" threads/screws on 4 sides. Very flat and heavy duty and only 4.5 cm (2") thick. Lightweight construction 1.5kg (3lbs) yet supports 30kg...

**Price:** £40/day  
£120/week



### PUMP-UP STEADY BAG

The Pump-up steady bag allows a camera to be molded into a sand-filled bag and the air evacuated by means of a hand pump to make the flexible base firm, as an aid to providing a camera mount over an irregular surface.

**Price:** £40/day  
£120/week



### CAT311 CARBON FIBRE MONOPOD (SOLOPOD)

Very stable 3-stage precision telescopic lightweight professional monopod with 3 stage telescopic leg, comfortable neoprene grip suitable for small to medium-weight cameras.

**Price:** £6/day  
£18/week



### CAMERA SUPPORT (SPIDER POD)

A stable but portable tripod riser and standing platform to elevate both camera tripod and operator two feet. An essential piece of equipment if you need just a bit of added reach, without going to a full Ladderpod.

**Price:** £81/day  
£243/week



### MAGIC ARM WITH CAMERA PLATE

Magic Arm, complete with K-clamp (Mafler Clamp) and camera plate for mounting small HDV/DV and DSLR cameras.

**Price:** £13/day  
£39/week

# GRIP ACCESSORIES



## 7" ROTATING OFFSET

Ronford Baker Moy/Mitchell fit 7" rotating offset. Usually used in conjunction with a dolly.

**Price:** £75/day  
£225/week



## LADDER 5-STEP A-FRAME

5 step A-Frame ladder

**Price:** £12/day  
£36/week



## STACK OF 4 AMERICAN BOXES

Stack of 4 American Boxes supplied in 75L crate.

Note that British Apple Boxes are stackable, whereas American Apple Boxes do not.

**Price:** £28/day  
£84/week



## GRIPS BOX OF 2-4-6 BLOCKS

Wooden Blocks which are 2", 4", 6"

**Price:** £12/day  
£36/week



## GROVEL PAD

Grovel Pad for kneeling on.

**Price:** £5/day  
£15/week



## SANDBAGS

6kg Sandbags

**Price:** £2/day  
£6/week



## K CLAMP

K clamp/Universal clamp/Italian/Mafler Clamp

**Price:** £5/day  
£15/week



## CARDELLINI / MATTELINI 2" CLAMP

Cardellini / Mathelini 2" Clamp

**Price:** £2/day  
£6/week



## PAGININI STACK (PAGS, PAGANINI)

Paginini Stack

**Price:** £28/day  
£84/week



### GRIPS BOX OF WEDGES

Grips Box of wedges (approx 50).

**Price:** £28/day  
£84/week



### 150MM BOWL ADAPTER

150mm Bowl adapter for O'Connor Tripod Heads

**Price:** £0/day  
£0/week



### BOSS TO 150MM BOWL OFFSET ADAPTER

Boss to 150mm bowl offset adapter.

**Price:** £20/day  
£60/week



### SPRING GRIP

Universal Spring Grip

**Price:** £2/day  
£6/week



### CAMERA SUPPORT (SPIDER POD)

A stable but portable tripod riser and standing platform to elevate both camera tripod and operator two feet. An essential piece of equipment if you need just a bit of added reach, without going to a full Ladderpod.

**Price:** £81/day  
£243/week



### MAGIC ARM

Magic Arm, for numerous on set applications.

**Price:** £7/day  
£21/week



### CAMERA PLATE FOR MAGIC ARM

Camera plate for Magic Arm

**Price:** £2/day  
£6/week



### 3 WAY LEVELLER

3 Way Leveller with Mitchell/Moy Fitting.

This converts a Boss fitting to a Moy/Mitchell plate.

**Price:** £23/day  
£69/week



### GROUND SHEET

Large Tarpaulin Ground Sheet.

**Price:** £6/day  
£18/week



### LARGE UMBRELLA

Large Umbrella. Note that we also sell these umbrellas at £65.00

**Price:** £12/day  
£36/week



### STACK OF 8 APPLE BOXES

Stack of 8 x Apple Boxes with trolley.

Note that British Apple Boxes are stackable, whereas American Apple Boxes do not.

**Price:** £44/day  
£132/week



### EASY UP TENT

Easy Up Tent, 3m x 3m including side panels.

**Price:** £69/day  
£207/week



### **WORLD CUP 150MM BOWL**

World Cup 150mm bowl to bazooka fitting.

**Price:** £20/day  
£60/week

# TROLLEYS



## MAX TROLLEY/FILM CART

A supremely strong film cart to be used as an alternative to a Magliner Senior but which packs down extremely small into a flight case formed by the upper and lower trays.

**Price:** £69/day  
£207/week



## MINI TROLLEY

Short version of the Magliner Junior camera department trolley

**Price:** £37/day  
£111/week



## JUNIOR TROLLEY

Magliner Junior camera department trolley

**Price:** £37/day  
£111/week



## SENIOR TROLLEY

Magliner Senior camera department trolley

**Price:** £58/day  
£174/week



## FOLD IT CART

Versatile foldable equipment cart for shifting heavy loads.

**Price:** £23/day  
£69/week

# UNDERWATER HOUSING



## **ALEXA/XT/SXT/LF/AMIRA/ALEXA MINI RED EPIC/DSMC2 UNDERWATER HOUSING**

Scubacam Mk II underwater housing compatible with ARRI Alexa/XT/SXT/LF/ARRI Amira & RED EPIC cameras. Depth rated to 4m, the housing also features waterproof viewfinder, 24V power feed, remote lens control & HD monitoring to the surface.

**Price:** £620/day  
£1,860/week

# SPECIAL



## ELECTRONIC TURNTABLE (100KG PAYLOAD)

White video turntable with 100kg payload, suitable for models.

**Price:** £91/day  
£273/week



## ORCAVUE LIFE "BULLET TIME 360 RIG"

Unique 'Bullet time 360' rig for providing the ultimate 'hero' selfie.

**Price:** £158/day  
£474/week